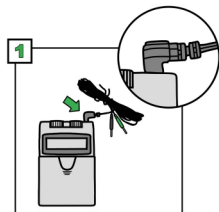
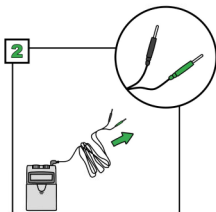


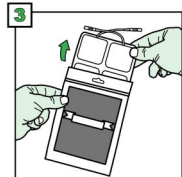
To begin operation of your MSP-T.E.N.S. unit, please follow steps 1-8 below. Repeat steps 1-8 for use of second lead wire in alternate socket when using 4 electrodes. For further detail of your unit please consult your MSP-T.E.N.S. Operation Manual. If you have questions regarding the operation of your unit, replacement electrodes, supplies or warranty information, please call us toll-free at 1-800-456-1971.



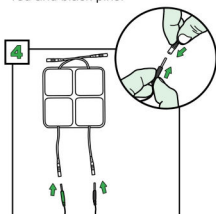
**1**  
Your T.E.N.S. unit ships with battery installed and one of two lead wires attached.



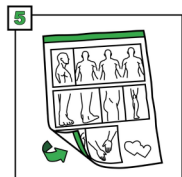
**2**  
Stretch out lead wire with red and black pins.



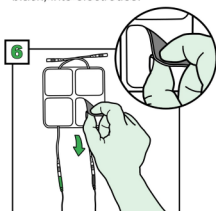
**3**  
Open sealed "Polystim II" bag and remove electrodes on clear liner.



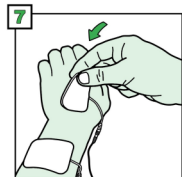
**4**  
Insert lead wire pins, red black, into electrodes.



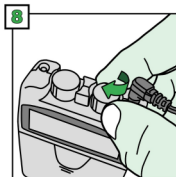
**5**  
Refer to placement guide on reverse of this sheet for proper electrode placement.



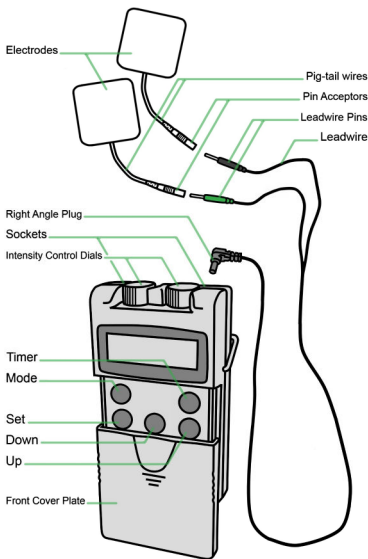
**6**  
Peel electrodes off of clear liner. Disregard color as pins are interchangeable.



**7**  
Place electrodes on clean, unbroken skin according to placement guide.



**8**  
Slowly turn right intensity control dial clockwise until stimulation is strong.



## Digital MSP-T.E.N.S.

### Preferred Settings

Mode: N  
Timer: 30  
Pulse Width: 120  
Pulse Rate: 120

**Battery Replacement:** Slide front cover plate off to expose battery housing and insert 9-volt battery. Cover plate removes completely.

**Contraindications:** Do not use MSP-T.E.N.S. if you have a demand type cardiac pacemaker. See MSP-T.E.N.S. Operation Manual for safety issues. See directions on electrode packaging prior to use.



**Medical Science Products, Inc.**

517 Elm Ridge Avenue  
P.O. Box 381  
Canal Fulton, OH 44614-0381

Phone: 1-800-456-1971

Fax: 1-330-854-1953

Web: [www.medsiencepro.com](http://www.medsiencepro.com)

Email: [info@medsciencepro.com](mailto:info@medsciencepro.com)